

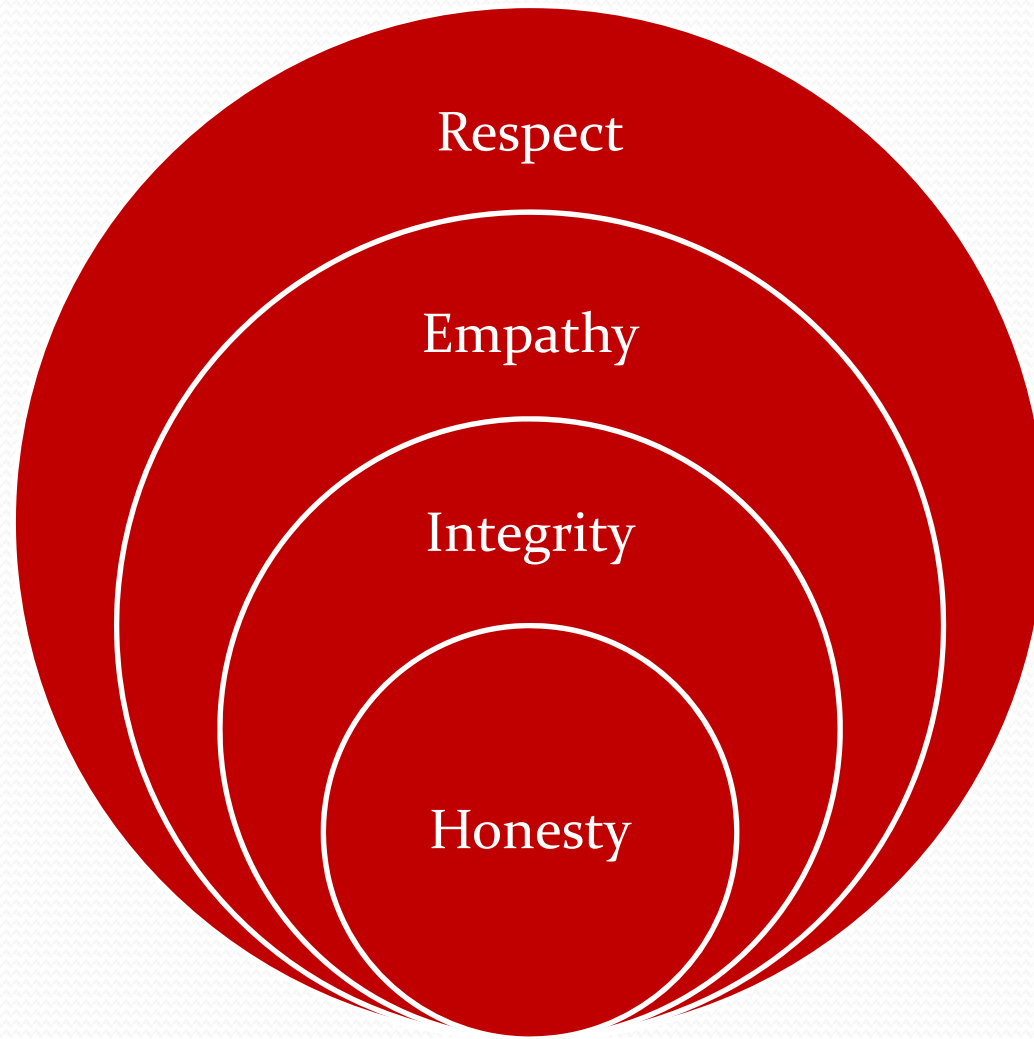


Alex Gonzalez Vinas, Ben Murphy, Margaret Boone,
Cassandra Flatt, Sawyer Leftwich, Walt Bower

Plan of Attack

A Plan to Improve Parts is Parts by BERPED

Company Core Values



Our Mission

- To present and execute a successful Enterprise Resource Plan to Parts is Parts in fulfillment to their expansion to the community of Brisket, Alabama. B.E.R.P.E.D.'s plan is to preserve honesty, use resources more wisely, and promote growth and development in the community.

How We Will Share Core Values?

- Dinners for potential employees
- Testing for potential employees
- Time off for religious holidays
- Daily motivational newsletter
- Selecting the Correct Core Values Vendor
- During interview process have employees do projects while many observers write down strengths and weaknesses they notice.
- Develop an idea of what a good team needs, not everyone can be a leader.

Sample Survey and Results

If in a conflict do you run away from the situation?

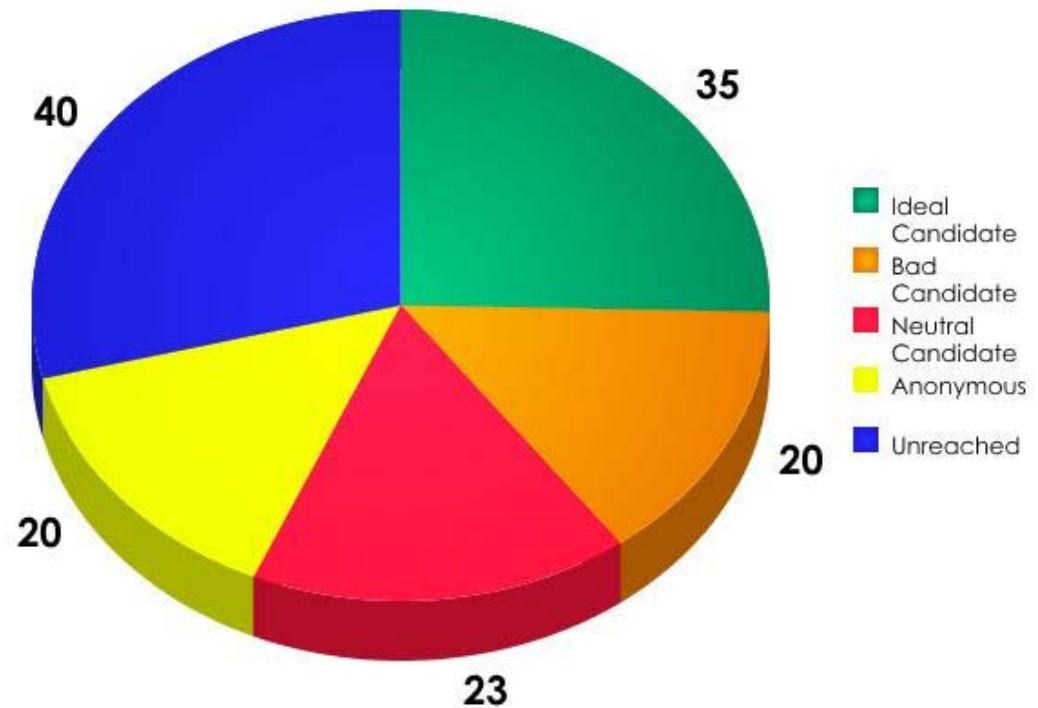
- Strongly Agree
- Agree
- Neutral
- Disagree
- Strongly Disagree

Do you work well with other people?

- Strongly Agree
- Agree
- Neutral
- Disagree
- Strongly Disagree

Are you leader?

- Strongly Agree
- Agree
- Neutral
- Disagree
- Strongly Disagree



Alabama Automotive Industry Growth

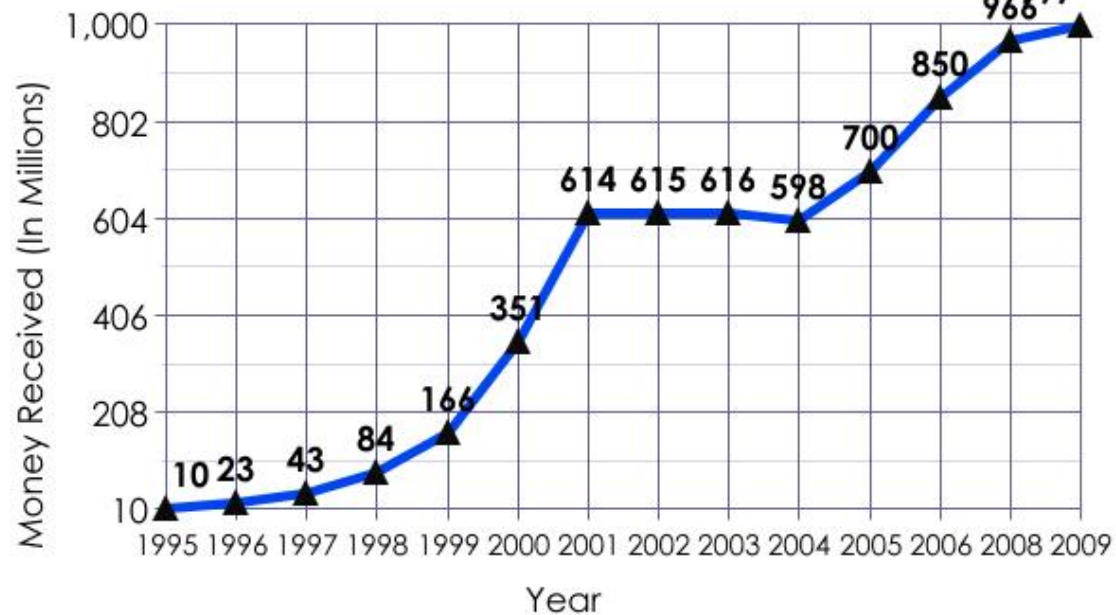
- *The automotive industry is growing quickly in Alabama*
 - Continues to grow, impacting more than 86,000 employees and generating nearly \$3.3 billion in payroll.
 - The study also predicts strong job growth over the next two to three years.
 - includes 207 companies that reported employment of 31,197 workers in 2003, up 3.4 percent from 2002
 - As a result these jobs support another 55,477 from companies working with the automotive industry

Alabama Automotive Industry Growth

- Experts agree about Alabama's automotive industry growth & potential

- "Alabama is a major player in automobile transportation - a major American industry," said Dr. Mary S. Spann, the senior research scientist who conducted the study, along with Dr. William Killingsworth.
- "While automotive manufacturers are a small part of Alabama's economic base at the moment, this segment of the economy is growing and has huge potential for extensive growth," says AAMA Executive Director Dr. Bernard Schroer.

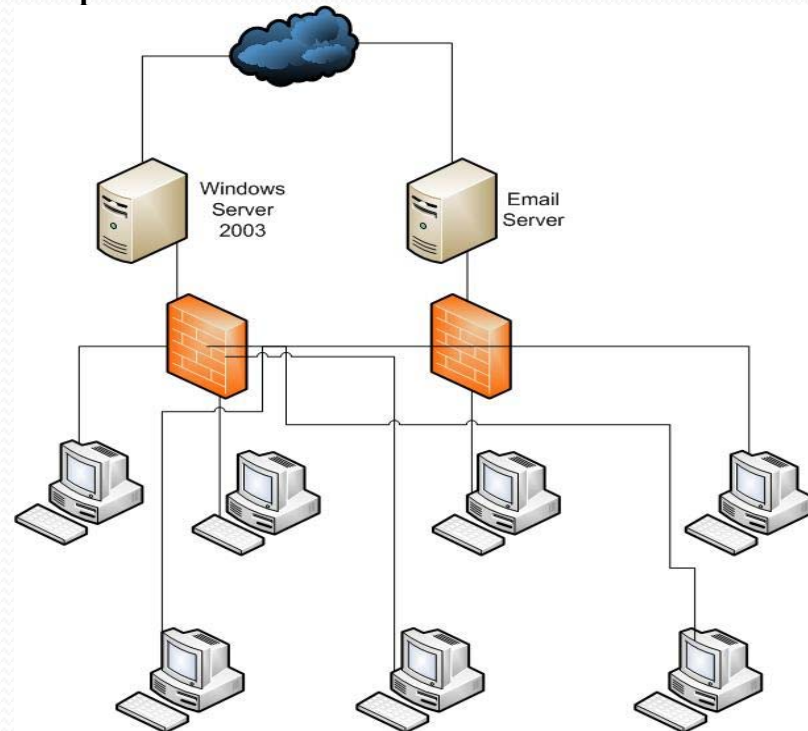
Projected Money Received From Displaced People (In Millions)



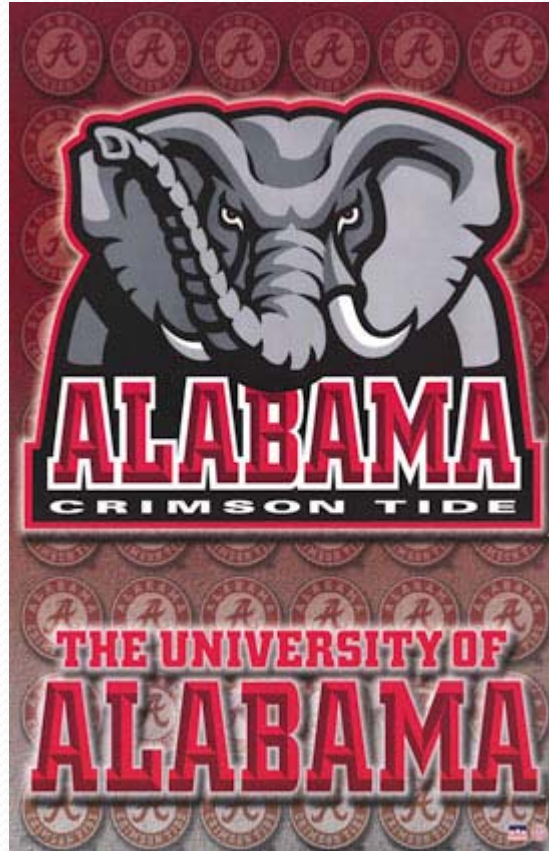
SOURCE: BERPED (Best Enterprise Resources Planning Evaluation and Deployment)

Customize IT Plan

- State of the art firewalls
- Competent Network Administrator
- Alcohol free work environment
- Servers that provides connections for displaced persons.
- Remote Desktop to surveillance all people



Questions?



ROLL TIDE!